

**ETC**  
**EVENTIDE**  
**THEATRE**  
**COMPANY**

**FEBRUARY 1-11, 2024**

NOËL  
COWARD'S

*Blithe  
& Spirit*

**DIRECTED BY**  
**LYNNE JOHNSON**

713 MAIN ST., RTE. 6A, DENNIS  
ON THE GERTRUDE LAWRENCE STAGE INSIDE  
THE HISTORIC DENNIS UNION CHURCH

TICKETS AT [EVENTIDEARTS.ORG](http://EVENTIDEARTS.ORG)  
OR THE BOX OFFICE 508-233-2148

*Produced through special arrangement with Samuel French, New York, New York*

Dear Theatregoers,

From what I've experienced in life thus far, and after coming back to directing after a too long hiatus, *Blithe Spirit* seems the appropriate play with which to dip my toes into the theatrical waters again as director. There is nothing more enjoyable to direct, perform in or watch than a well-written comedy. British comedy has an even quicker wit it seems. Even as I write this, I find myself slipping into a British accent inside of my head, and my word choice is colored by Coward's language and tone.

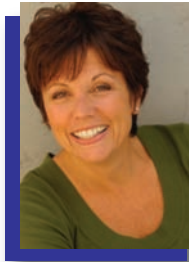
Noel Coward was quite a charming, witty, brilliant writer with his slick and suave persona found in every bit of dialogue in this play. What draws me into this play is how that dialogue flows from character to character like a well oiled machine. His character choices are perfect for this "improbable farce" and the way they slip in and out of each scene makes a three act play feel lively and quick. One can almost sense that the character of Charles Condomine is a spectre of Noel Coward himself and the gliding, sharp-witted Elvira our own Gertrude Lawrence. Perhaps there are more ghosts in this play than we may realize.

It is very fitting to have this wonderful play performed on the Gertrude Lawrence Stage here in Dennis, since "Gertie" and Noel were very close friends, meeting at the age of eleven and thirteen. They became forever friends and stage partners, their relationship blossoming on and off stage with her as his muse and he her champion in many stage experiences.

I am delighted to be a part of this brilliantly written comedy, and to be stepping back into a world I have been a part of for well over thirty years. My hope for all of you watching this play is that you get to step away from your everyday world for a moment, get into the world of this improbable farce and enjoy the crazy ride. As Madame Arcati says: "Down with your head, up with your heart, and you're over the top like a flash, and skimming down the other side like a dragonfly." Enjoy the much needed laughter.

*Lynne Ruberti Johnson*

Lynne Ruberti Johnson, Director



## PRODUCTION STAFF

DIRECTOR... Lynne Ruberti Johnson  
 PRODUCTION MANAGER... Donna Wresinski  
 BUSINESS MANAGER... Jen Sartanowicz  
 STAGE MANAGER... Kaleigh Mason  
 SET DESIGN, CONSTRUCTION, SPECIAL EFFECTS... Guy Trudeau  
 SET CONSTRUCTION... Chuck Gifford, Zack Johnson  
 LIGHTING DESIGN... Christopher Ostrom  
 LIGHT BOARD OPERATOR... Vicky Marchant  
 PROPS DESIGN... Priscilla Hurley  
 PIANIST/MUSIC... Pam Wannie  
 SET CONSTRUCTION, SOUND... Toby Wilson  
 COSTUME DESIGNER, RUN CREW... Amy Canaday  
 HOUSE MANAGER... Sally Stratman  
 MARKETING... Sue Martin, Jennifer Kain DeFoe  
 of Kain DeFoe Communications, Inc.  
 PROGRAM/POSTER DESIGN... Kim Adams, Addison & Associates - Dennis

## CAST (In order of appearance)

*Edith* .....Madison Mayer  
*Ruth Condomine* .....Rebecca Riley  
*Charles Condomine* ..... Zack Johnson  
*Dr. Bradman* .....Alex Lucchesi  
*Mrs. Bradman* ..... Liz Argo  
*Madame Arcati* ..... Kathleen Larson Day  
*Elvira* ..... Shannen Dando

## EVENTIDE THEATRE COMPANY BOARD OF DIRECTORS

John Schofield – President • Kathleen Larson Day – Vice-President  
 Susan Martin – Treasurer • Lynne Johnson – Secretary

Bethany Ambrose • Marilyn Archibald • Liz Argo  
 Connie Champlin • Bonnie Corliss • Charles Gifford III • Sue Schofield

Box Office 508-233-2148 • EventideArts.org • Info@EventideArts.org  
 713 Main Street, Route 6A, P.O. Box 2020, Dennis, MA 02638



Welcome to the 2024 Eventide Theatre Company Season. We are thrilled that you have decided to support us by attending. We have a wonderful season in store for you. Eventide has "Magic To Do" in 2024.

We open with a magical, classic comedy, *Blithe Spirit* by Noel Coward. This hilarious British comedy is designed to conjure up some magic and a lot of laughter.

Next up is Stephen Swartz's musical *Pippin*. Complete with songs we all know like "Magic to Do" and of course original choreography by the great Bob Fosse.

Our ETC 3rd Annual Cabaret is on June 16 at the Cape Cod Cultural Center. Enjoy great food and drink, bid on one of our many unique auction items while you are entertained by some of the Cape's best performers. This is our biggest fundraiser of the year.

Our season closes with Neil Simon's *The Odd Couple*, but with a twist. Neil Simon wrote the original male version and then followed it up with a female version. Trivia instead of poker but with all the clever banter and iconic characters. Get tickets to both!

Our season also includes our Kaplan playreading event in December. A collaboration between ETC and Dennis Union Church, where we present the short opera *Amahl and the Night Visitors*. If you have never seen this beautiful show, now is your chance.

I am a very proud and humbled to be the Artistic Director. The Board of Directors, our production staff, our Artistic Staff and our volunteers have raised the bar at Eventide. We continue to support our mission to provide "thought-provoking performances that stimulate and educate Cape audiences of all ages." and we get better at it each year.

Of course none of this would be possible without the support of our members. If you are already a member - thank you. If you need to renew or would like to join, please see me or any of the house staff to learn about the member benefits. The biggest benefit is that you will become a part of the Eventide family and help us to continue to bring quality theatre to Cape Cod.

As I enter my third year in this role I am more grateful than ever to be a part of our thriving theatre community on Cape Cod. Thank you for making this the most rewarding job I have ever had.

Enjoy the show and the season.

Donna Wresinski "2"

Donna Wresinski, Artistic Director

## SETTING

The action of the play passes in the living room of Charles Condomine's house in Kent, 1942

## Act I:

*Scene One - Before Dinner On A Summer Evening*  
*Scene Two - After Dinner*

## Act II:

*Scene One - The Next Morning*  
*Scene Two - Late The Following Afternoon*

## INTERMISSION

## Act II:

*Scene Three - Early Evening. A Few Days Later*

## Act III:

*Scene One - After Dinner. A few days later*  
*Scene Two - Several Hours Later*

Please note that any recording of this performance, either through video or photography is strictly prohibited.

A reminder that mobile phones should also be turned off, and not to silent.

Restrooms can be found just off the lobby.

Smoking is not allowed anywhere on the property.

Thank you and enjoy the show!



## CAST (IN ALPHABETICAL ORDER)

**LIZ ARGO** (*Mrs. Bradman*) Liz's parents, Gordon and Betsy Argo, started the Orleans Arena Theatre in 1950. The Argo parents took advantage of Liz's budding talent starting at the age of three. From then on, Liz was a familiar face on the stage of the Arena Theatre. Before leaving a career in the film business in 2006, Liz wrote and directed a PBS documentary about growing up in the Arena Theater. The film, "Stagestruck: Confessions from Summer Stock Theater," can be seen on PBS and on YouTube: <https://www.youtube.com/watch?v=KS9FuvM8Oz0> In 2022, Liz joined the Eventide Theatre Board of Directors and, after several decades away, returned to acting, appearing as Aunt Hannah and Dylan Thomas' 12-year-old buddy, Jack, in Eventide's *A Child's Christmas in Wales*. Since then, Liz has earned positive reviews for her work at the Academy of Performing Arts and for her portrayal of Inspector Kemp in *Young Frankenstein* this summer at the Cape Cod Theatre Company. Liz hopes you will enjoy her return to Eventide to portray the fabulous Mrs. Bradman.

**KATHLEEN LARSON DAY** (*Madame Arcati*) is excited to participate in this production alongside so many wonderful performers and dear friends! She was most recently seen at ETC as Joanne in *Company* and Mrs. Gibbs in *Our Town* and was nominated for an EMACT Dash Award for Best Supporting Actress for her *Our Town* performance. At CCFtA she appeared as Miss Lynch in "Grease" and was part of the stellar cast of Kander and Ebb's *The World Goes Round* also at CCFtA. Kathleen and her husband own and operate The Inn at Yarmouth Port, an award-winning bed and breakfast that is proud to support the arts on Cape Cod. She would like to dedicate her performance to the late Dame Angela Lansbury and the hilarious memory of meeting her (ask me!) after her West End performance of *Blithe Spirit*. Thanks to DW, LJ, PW and of course Chuck, who makes all things magical.

**SHANNEN DANDO** (*Elvira*) is thrilled to be a part of *Blithe Spirit* with ETC as Elvira. This is her first production with ETC! She recently worked as Nina in *Vanya, Sonya, Masha & Spike* with GNOP and Yvette from *Clue: Onstage* after a long time away from the stage. She's previously been in *Bye Bye Birdie*, *The Night of January 16th*, *Crazy for You*, *Hello Dolly!* and *The Crucible*. When she's not on stage, she enjoys spending time outside and continuing the hunt for the best breakfast sandwich. Shannen would like to give a big thanks to her friends and family for always supporting her passions.

**ZACK JOHNSON** (*Charles Condomine*) was born in Hudson, MA and washed ashore on the Cape in Eastham with his family a few years ago. Recently on the Cape Zack was seen as Mr. Wormwood in Cotuit Center for the Arts' production of *Matild*. He also played Victor Frankenstein in CCTC/HJT's *Young Frankenstein*, Bobby in Sondheim's *Company* with Eventide Theatre Company, Dennis in *Rock of Ages* with Barnstable Comedy Club, Man 2 in *The World Goes Round* with Cotuit Center for the Arts, and the Teen Angel in *Grease* also with Cotuit.

**ALEX LUCCHESI** (*Mr. Bradman*) This is Alex's first stage appearance on Cape Cod, having recently relocated from the Boston Area. He has performed and directed for many years. Most recently he portrayed Charleton in *Light Up the Sky* and the Lord Chancellor in *Iolanthe* for Arlington Friends of the Drama. He is a founding member of Theatre To Go, Inc. in Melrose. When not participating in community theater, Alex is an ELA teacher at D-Y Middle School. He would like to thank everyone at Eventide for making him feel so welcome.

**MADISON MAYER** (*Edith*) was born and raised on Cape Cod where she has been performing for the past 16 years. Madison was last seen as Inga in *Young Frankenstein* (CCTC), Cinderella in *Into the Woods* (ETC), Missy Miller in *The Marvelous Wonderettes* (CCTC), Lisa / Sophie understudy in *Mamma Mia!* (Cape Rep), Johanna in *Sweeney Todd* (Provincetown Theatre), Virginia in *Nevermore* (WHAT), and Dainty June in *Gypsy* (CCfA). Madison studied tap dance at the Academy of Performing Arts as well as voice with various Cape local legends. Madison also teaches piano, voice, ukulele, and various ensemble groups at Steeple Street Music Academy (Mashpee), and currently owns Cape Cod Charcuterie Company @capecodcharcuterie. Much love to Lynne Johnson as she makes her Cape Cod Directorial Debut!

**Rebecca Riley** (*Ruth Condomine*) Rebecca is happy to return to the Eventide stage to join this spirited cast and crew. She was last seen at ETC as Amy in *Company*. Other Eventide credits include Scout Finch in the sold out run of Aaron Sorkin's *To Kill a Mockingbird*, Little Red Riding Hood in *Into the Woods*, Cathy Hyatt in *The Last Five Years* and Illona Ritter in *She Loves Me*. Many thanks to the talented cast and production team and especially to her family for all the love and support.

## CREW

**LYNNE RUBERTI JOHNSON** (*Director*) Lynne is extremely excited to be joining Eventide Theatre Co. as Director of *Blithe Spirit*. She has many years experience in the theatre as producer, director, actor and educator and serves on the ETC Board of Directors. Lynne was last seen on the ETC stage in both *Into the Woods* as the Stepmother and *Company* as Jenny alongside her son Zack as Bobby. Favorite roles on stage include Sister Robert Anne in *Nunsense*, Miss Andrews in *Mary Poppins* and Reno Sweeney in *Anything Goes* to name a few. Lynne dedicates this directing experience to her late husband Paul, the absolute love of her life, who once shared the stage with her in many capacities. She also sends love and gratitude to the community of beautiful family and friends, who always support her love of the arts. Lynne is co-owner of Sunset Leisure Gift Shop in Orleans with her son Josh and has gratefully shared the stage on many occasions with her son Zack (Charles Condomine). In the words of Madame Arcati... "Down with your head, up with your heart, and you're over the top like a flash and skimming down the other side like a dragonfly."

**DONNA WRESINSKI** (*Production Manager*) Donna is a graduate of Framingham State College, Lesley University and Worcester State College. Prior to moving to the Cape, Donna was the founding director of the Framingham High School Drama Company and has directed hundreds of shows in the Worcester - Boston area including: *Fiddler on the Roof*, *Oklahoma*, *Carousel* and just about every Rodgers and Hammerstein musical. Donna's production of *Oliver!* toured in Russia and her production of *Once On This Island* was invited to perform in Scotland at The Fringe Festival. Donna is also a performer and some of her favorite roles include, Aldonza in *Man of LaMacha*, Marta in *Company* and the Witch in *Into the Woods*. A newcomer to the Cape, Donna has most recently directed *Company* and *Into the Woods* for Eventide and *World Goes Round* at Cotuit Center for the Arts. Donna will be directing ETC's next show *Pippin* which will open on April 25. She also currently serves as the Executive Artistic Director to The Eventide Theatre Company. Donna dedicates this season and every season to her favorite life and stage partner her late husband R. Michael Wresinski. Donna is forever grateful to her good and crazy friends on the Cape who have welcomed her with love and kept her company. Special love and thanks to Kathleen, Chuck, Lynne, Sue, David, Guy, Toby, and Priscilla. "2"

**JENIFER SARTANOWICZ** (*Business Manager*) is thrilled to be working with ETC. Former credits include, General and Company Manager at The Cape Playhouse, Assistant Stage Manager for the *The Hello Girls* (Off-Broadway), and Stage Management PA for *Falsettos* (National Tour). She has also worked with Musical Theatre West, Segerstrom Center for the Arts, and Newport Children's Theatre. In the daytime hours, she serves as Employee Learning and Engagement Manager for Community Connections Inc. Thank you Donna and the Board for your support and congratulations to the company.

**KALEIGH MASON** (*Stage Manager*) is thrilled to be a part of the theater again! Her last performance was her middle school's version of *Into the Woods* as Cinderella. Now she is taking on the role of Stage Manager. Learning as much as she can under the tutelage of Donna Wrensinski, Kathleen Larson-Day, Priscilla Hurley, and Pam Wannie as well as the entire cast and crew. She has learned so much and had the most fun working with this incredible cast and crew and is grateful for the opportunity to rejoin the theater community!

**GUY TRUDEAU** (*Set Design, Construction, Special Effects*) has worked in the visual and theater arts for most of his life. He has worked in local productions as an actor, lighting designer, sound designer, carpenter, and scenic designer. Some of his most recent scenic designs include Eventide's productions of *To Kill a Mockingbird*, Stephen Sondheim's *Assassins* and *Twain by the Tail*. Other scenic designs include *Annie* (Cotuit Center for the Arts), *Noises Off!*, *The Rocky Horror Show*, *Macbeth*, and *Why Torture is Wrong (And the People Who Love Them)* - (Tilden Arts Center at Cape Cod Community College), *Alice in Wonderland* (Provincetown Theater), *The Trailer Park Musical* (Cape Cod Theater Company at HJT). My Favorite Year (as lighting designer, Barnstable Comedy Club). Guy has also served as the master carpenter for the Eventide productions of *HA!*, and *Our Town*.

**CHRISTOPHER OSTROM** (*Lighting Design*) Credits include productions for Odyssey Opera, Opera San Jose, Tulsa Opera, Arizona Opera, Chautauqua Opera, Mobile Opera, Hawaii Opera Theater, Asolo Repertory Theatre, Kentucky Opera, Opera Boston, Syracuse Opera, New England Conservatory, Opera Providence, Boston Conservatory, The Toronto Symphony, Macau International Music Festival, Curtis Institute of Music, Boston Early Music Festival, New Repertory Theatre, Stoneham Theatre, Boston Ballet, Snappy Dance Theatre, Boston's Christmas Revels, Brandeis University, and Bard College. Christopher is the Producing Artistic Director at Wellfleet Harbor Actors Theater, where he has designed or directed over 70 productions since 1997. Member: United Scenic Artists Local USA-829 of the IATSE.Chatham.

**VICKI MARCHANT** (*Lightboard Operator*) is pleased to be back with Eventide Theatre Company where she has operated lights for every show for the last twelve years. In addition to ETC, Vicki has operated lighting for productions at the Barnstable Comedy Club. Her credits for operating lights and sound include: *The Three Penny Opera*, *The Price*, *The Laramie Project: Ten Years Later*, *The Little Prince*, *A Little Night Music*, *Born Yesterday*, *Tom Sawyer*, *The Heiress*, *Dancing at Lughnasa*, *Yours Anne*, *A Funny Thing Happened on the Way to the Forum*, *A Moon for the Misbegotten*, *Fools*, *Educating Rita*, *The Waverly Gallery*, *The Dining Room*, *Trial by Jury*, *Over the River and Through the Woods*, *Pfeiffer's People*, *She Loves Me*, *Radio Ridiculous*, *To Kill a Mockingbird*, *Assassins*, *The Last 5 Years*, *HA!*, *Our Town*, *Into the Woods*, *The Sunshine Boys* and *A Child's Christmas in Wales*, *All My Sons*, *Company*, *Next to Normal*, and *It's a Wonderful Life*. Vicki is convinced that the lighting booth is the best seat in the house.

**PRISCILLA HURLEY** (*Props Design*) is pleased to be back working at the Eventide Theatre Company. She has been involved with Eventide since 2015 and has worked in various capacities such as Asst. Stage Manager, Stage Manager, Props, Sound and Set Painting. Her most recent involvement as Stage Manager has been for *Radio Ridiculous*, *To Kill A Mockingbird*, *Assassin's*, *HA!*, *Our Town*, *Into The Woods*, *The Sunshine Boys*, *A Child's Christmas in Wales*, *All My Sons*, and *Company*. Many thanks to all the talented actors and production staff that I have been privileged to work with.

**PAM WANNIE** (*Pianist/Music*) Pam Wannie is delighted to be back at Eventide. Pam has most recently music-directed *Grease*, *The World Goes Round*, *Sound of Music* and *Elf* at Cotuit Center for the Arts; *Next to Normal*, *Company* and *Into the Woods* at Eventide Theatre Company, *Story of My Life* at Falmouth Theatre Guild and *Next to Normal* at Woods Hole Theater Company. Additionally, she has music-directed many shows at Cape Cod Academy and played shows at Barnstable Comedy Club and Barnstable High School. By day Pam is the Coordinator of Spiritual Care at Duffy Health Center and Pastor for Homeless Ministries at the Cape Cod Council of Churches, offering compassionate connection and space for healing with our most vulnerable and most underserved populations. Sending love and gratitude to Adam who supports all my endeavors! What a joy!

**TOBY WILSON** (*Set Construction, Sound*) previously served as the Artistic Director for the Eventide Theatre Company for six years. Previously for ETC he directed *The Waverly Gallery*, *The Laramie Project: Ten Years Later*, *The Price*, *Radio Ridiculous*, *HA!*, *Our Town* and most recently *It's a Wonderful Life: A Live Radio Play*. He acted and directed for fourteen years at the Vineyard Playhouse on Martha's Vineyard before moving to Cape Cod in 2005. He has performed for The Eventide Theatre Company, the Cotuit Center for the Arts, the Barnstable Comedy Club, Cape Rep Theater and for Counter Productions in Provincetown; as well as directing shows for Eventide, the Cotuit Center for their Arts and the Barnstable Comedy Club. As a performer, he has recently appeared as Carlson in *Of Mice and Men* and Doctor Einstein in *Arsenic and Old Lace* at the Cotuit Center of Arts, as well as the Head Waiter in *She Loves Me* at Eventide.

**AMY CANADAY** (*Costume Designer, Run Crew*) As a freelance costume and prop designer, Amy has spent the last decade working on shows at theaters and schools around Cape Cod. Some of her favorite past shows include: *Gypsy*, *Sunday in the Park with George*, *Man of La Mancha*, and *Elf* at Cotuit Center for the Arts; *Rock of Ages*, *Urinetown*, *She Kills Monsters*, and *Nothing is the End of the World...* (*Except for the End of the World*) at the Tilden Art Center at Cape Cod Community College; *She Loves Me*, *To Kill A Mockingbird*, and *Assassins* at Eventide Theater Company; and *Straight White Men* and *The Complete Works of William Shakespeare (Abridged)* at Wellfleet Harbor Actors Theater. She would like to thank everyone at ETC and her family for once again letting her take over the house with costume projects.

**SUSAN AHEARN** (*Psychic Medium/Consultant*) The Cape Cod Happy Medium, is an American Radio Show Co-Host, Psychic Medium, Film Actor, Paranormal Consultant and Investigator. You can find her on "Paranormal Ministries" podcast working alongside her Travel Channel Demonologist co-host. Internationally renowned for connecting the living with the dead, she is what paranormal enthusiasts would call "the real deal." After several near death experiences, Susan has first hand knowledge about the other side... making her an expert consultant for Hollywood, on an upcoming thriller. You can follow her award winning Investigative Team "Mass Hauntings" on YouTube. Locally she offers private readings and monthly table tipping sessions in Wellfleet.



## EVENTIDE THEATRE COMPANY WISHES TO THANK THE FOLLOWING:

The staff and parishioners of the Dennis Union Church (particularly Jane B. Wilson and David Crocker) Steve Oney, Tom Story, Cape Cod Radio Mystery Theater, Cotuit Center for the Arts. Osterville Hardware and the Barnstable Comedy Club for loaning us set pieces and props. All those Foundations, local municipal Cultural Councils, and individual donors and members of ETC (who are listed in this program), whose dollars continue to support our efforts significantly...as well as those volunteers who support our work in a myriad of ways.

Bicycle on loan from Cycle Recycle in Dennis, MA - 508-751-0362



## THANK YOU TO OUR *BLITHE SPIRIT* VOLUNTEERS!

Marilyn Archibald • Linda Arthur • Carlene Brown • Connie Champlin

Diane Cooney • Diane Depczenski • Max Dexter • Morgan Dexter

Kathryn Flett • Marianna Page Gidden • Kathie Hegner • Alexis Jones

Barry & Ruthe Lew • Eleanor Lopez • Jane Loutzenhiser • Sue Martin

Judy McElroy • Linda McPartlan • Cal Mutti • Karen Mutti • Judith Partelow

Ann Ring • Donna Rivers • Frank Scanzillo • John Schofield • Sue Schofield

Doug Sivco • Lyn Solomon • Sally Stratman • Kathy Strudwick • Kasey Young

*Lily's Florist and Gifts*

**Your Local Florist** **508-760-6726**  
[LilysFloristAndGifts.com](http://LilysFloristAndGifts.com) • 1049 Route 28 • South Yarmouth

**JD LAW OFFICES OF JOHN C. DORN**

**Personal Injury Law**  
 Locations in  
 Barnstable • Marion

508-776-6526 • [john@dorningjurylaw.com](mailto:john@dorningjurylaw.com) • [dorningjurylaw.com](http://dorningjurylaw.com)

**Sunset LEISURE**  
 GIFT SHOP

**CUSTOM LASER ETCHING**  
 GAMES • PUZZLES • CARDS  
 BARWARE • SERVEWARE  
 CAPE COD INSPIRED GIFTS  
 LOCAL COFFEE AND TEA

96 RT 6A  
 ORLEANS MA  
 774-316-4641  
[SUNSETLEISURECC@GMAIL.COM](mailto:SUNSETLEISURECC@GMAIL.COM)

**Proud Supporters  
 of Eventide  
 Theatre  
 Company**

Dr. Jefferson S. Dexter

Cape Cod Dental  
 Health Center

508-771-6122  
[CapeCodDentalHealth.com](http://CapeCodDentalHealth.com)

196 Higgins Crowell Rd.  
 West Yarmouth, MA

**Greg DeLory Design**  
 Sustainable design for  
 new homes and renovations  
[greg@gregdelory.com](mailto:greg@gregdelory.com)  
[www.gregdelorydesign.com](http://www.gregdelorydesign.com)  
 774-207-0251

**OPEN DAILY**  
JOIN US FOR COFFEE, BAKED GOODS, BREAKFAST & LUNCH SANDWICHES + GOOD VIBES

**WEEKEND MUSIC SERIES**  
SATURDAYS AND SUNDAYS FROM 11AM - 1PM  
FOLLOW US ON SOCIAL MEDIA FOR DATE REMINDERS, UPDATES & MORE

BUCKIES BISCOTTI - DOWNTOWN DENNISPORT 508.398.9700 WWW.BUCKIESBISCOTTI.COM

**ENGINEUTY INC.**  
EUROPEAN AUTO REPAIR

Specialize In Servicing:  
BMW MERCEDES AUDI VW  
LAND ROVER VOLVO MINI  
508-385-3607 [engineuityautorepair.com](http://engineuityautorepair.com)  
222 Old Chatham Rd., S. Dennis

*Thank You*  
To All Our Wonderful Advertisers  
From Eventide Theatre Company

Please Support These  
Businesses and...  
*Let Them Know You Saw  
Their Business Here!*  
[EventideArts.org](http://EventideArts.org)

**STARLIGHT LODGE**  
CAPE COD

Winner of many prestigious honors, 5-star reviews  
& Trip Advisor's Award of Excellence

Affordable luxury | Minutes to beaches | Heated Pool | Dog friendly | New 2 Bedroom Private Rental  
508.385.3464 | [StarlightLodgeCapeCod.com](http://StarlightLodgeCapeCod.com) | 203 Main St. (Route 6A) Dennis, MA

**THE MONTGOMERY FINANCIAL GROUP**

**SMALL BUSINESS SERVICES**

- Business Entity Formation
- Retirement Plan Administration
- Payroll and Bookkeeping
- Tax Return Preparation

*"Do what you do best and let us do the rest."*

195 ROUTE 6A, SUITE 8 • ORLEANS, MA 02653-3240  
508-240-1151 • [ERYN@TMFGI.COM](mailto:ERYN@TMFGI.COM) • [JONATHAN@TMFGI.COM](mailto:JONATHAN@TMFGI.COM)  
[WWW.THEMONTGOMERYFINANCIALGROUP.COM](http://WWW.THEMONTGOMERYFINANCIALGROUP.COM)

Proud Supporter  
of Eventide  
Theatre Company

**PAY CAPE COD**

[www.paycapecod.com](http://www.paycapecod.com)  
508.280.4221  
Sue Martin

**THE INN AT YARMOUTH PORT**  
CAPE COD, MA

**We Support The Arts!**

168 Route 6A  
Yarmouth Port, MA 02675  
(508) 744-7546  
[stay@theinnatyarmouthport.com](mailto:stay@theinnatyarmouthport.com)  
[www.theinnatyarmouthport.com](http://www.theinnatyarmouthport.com)

**True Value®**

Brewster True Value Hardware  
**James Baskin**  
Owner

2632 Main Street  
Brewster

508.896.6610  
[capecodhardware1@gmail.com](mailto:capecodhardware1@gmail.com)

**Dennis Union Church, UCC**  
an open and affirming congregation

*No matter who you are or where  
you are on life's journey, you are  
welcome here.*

— — — — —

**worship-community-faith**

Route 6A at Old Bass River Road  
[www.duchurch.org](http://www.duchurch.org) 508-385-3543

Unique, affordable, escorted, small group  
tours to the Galapagos Islands, Peru, Amazon  
Rainforest & European River Cruises

**Cultural Adventures**  
*Tours for the Young-at-Heart*

- Maximum group size of 10
- Designed for the over fifty traveler
- Escort provides support before & during trip
- Includes all hotels, most meals, tours, local flights, airport transfers

**Connie Champlin (317) 908-1220**  
[cchamp@culturaladventures.info](mailto:cchamp@culturaladventures.info)  
[culturaladventures.info](http://culturaladventures.info)

**Cape Light Compact** | **mass save**  
Your Trusted, Local Energy Resource!

**Offering Energy Efficiency Programs for:**

- Single or Multi-Family Homes
- Homeowners and Renters
- Income-Eligible Customers
- Businesses and Non-profits
- Renovations and Additions
- New Construction

[www.capelightcompact.org](http://www.capelightcompact.org)



# VOLUNTEER OR BECOME A MEMBER

## MAKE A DIFFERENCE: VOLUNTEER!

Eventide relies on the wonderful support of dedicated volunteers ("Friends of Eventide"), whose passion for the organization helps make us a success. Eventide's Friends assist in several capacities, including ushering, box office, set building and mailings. Become a part of the Eventide family by volunteering: Contact us today!

## MAKE A DONATION & BECOME A MEMBER

As a not-for-profit arts and community organization, charitable contributions are vital to our mission of producing thought provoking theater while serving the Cape Cod community.

A thrilling line-up awaits as we return to stage and resume performances. The 2024 Season reflects the artistic excellence that you love, and the commitment to our Cape Cod community that you expect. Come share the moments—together, in-person, once again—that inspire our collective humanity. But none of it is possible without you.

Ticket sales cover less than one-half of Eventide's production costs and operating expenses like most not-for-profit performing arts venues. Memberships and donations are tax-deductible and help us to provide the community with a home for the performing arts that enhances the quality of life, educates and inspires our youth, and supports the local economy. Thank you for supporting Eventide Theatre Company. We are thrilled to welcome you back to our stage.

Please consider making a tax-deductible gift, and become a MEMBER and enjoy the special benefits that come along with that. Information can be found on our website.  
EventideArts.org

Your support is crucial to the success of our productions and programming.



# We've got magic to do at

## ETC 2024 EVENTIDE THEATRE COMPANY Season

February 1-11



April 25-May 12



June 16 at the Cape Cod Cultural Center

## ETC Cabaret



Tickets at [eventidearts.org](http://eventidearts.org) or the box office 508-233-2148



# Nothing Tops Our Home Made Ice Cream

*...except cherries and sprinkles or  
hot fudge or butterscotch or mixed  
nuts or whipped cream!*



## Homemade Premium Ice Cream

Homemade Waffle Cones • Soft Serve • Frappes  
Ice Cream Cakes • Gelato

Also Delicious Panini's & Soups *Hyannis Location Only*



**645 Iyanough Rd /  
Route 132  
HYANNIS**

**508-568-3600**

**OPEN YEAR ROUND**

*In the Hyannis  
Christmas Tree Plaza /  
Trader Joe's*

**716 Main St., Rte 6A  
DENNIS**

**508-385-2800**

*"In the heart of Dennis Village"*

**5 Theatre Colony  
Rd / Rte 28  
SOUTH YARMOUTH**

**508-398-8400**

*Next door to All Seasons Resort  
across from the  
Hearth 'n Kettle Plaza*



**[www.capecodcreamery.com](http://www.capecodcreamery.com)**